

Going wild in the Cape Floral Kingdom

Sally Hey

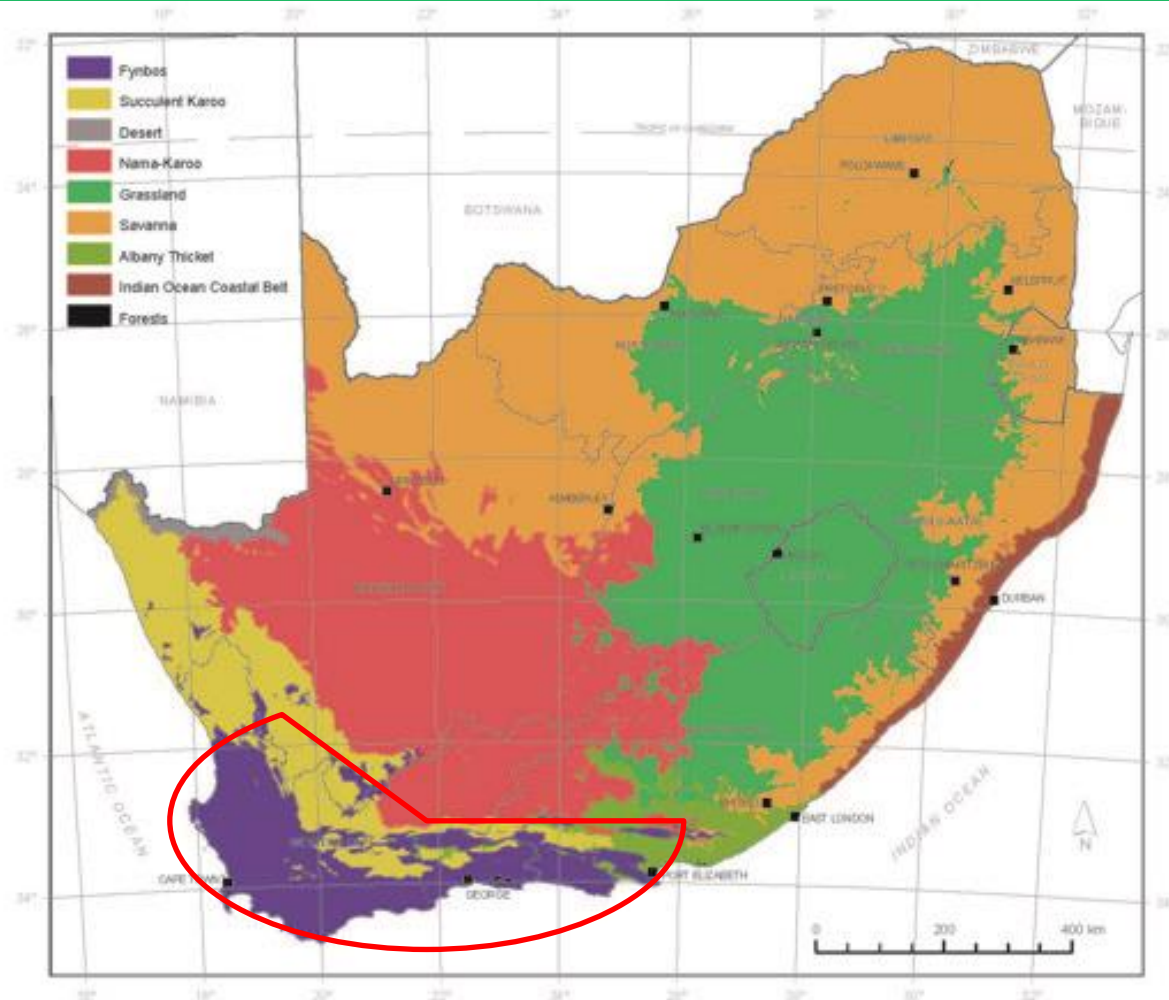


The World's 6 floral kingdoms



The Cape Floral kingdom exists entirely within South Africa and covers just 0.04% of the Earth's land surface.

Vegetation map of South Africa



The Cape Floral kingdom is found within the red line on this map.

It is dominated by Fynbos (in purple), with areas of Afro-montane forest, Renosterveld and succulent vegetation.



The Cape Floral Kingdom

- The **Cape Floral Kingdom** is characterized by its high richness in plant species (8 700 species) (compare the UK, with approx. 1500 native species). More than 7000 of these species are found within the **Fynbos** areas of the Cape Floral Kingdom
- Fynbos averages **150-170 unique species** per 1000km².
- There is high **endemicity** (68% of plant species are confined to the Cape Floral Kingdom).
- Apart from the vast diversity of flora, it is the **threat** to the biodiversity that results in it being considered the “**hottest hotspot**,” with 3087 species of conservation concern.
- In 2004 the Cape Floral Kingdom, including Kirstenbosch, was declared a **UNESCO World Heritage site**.

Common Cape Floral Kingdom families



ASTERACEAE – >1000 species



FABACEAE - >750 species



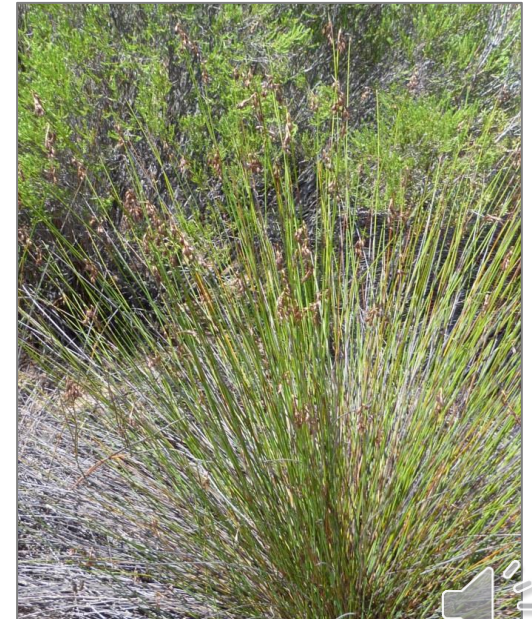
ERICACEAE - >650 species



GEOPHYTES – 1400 species

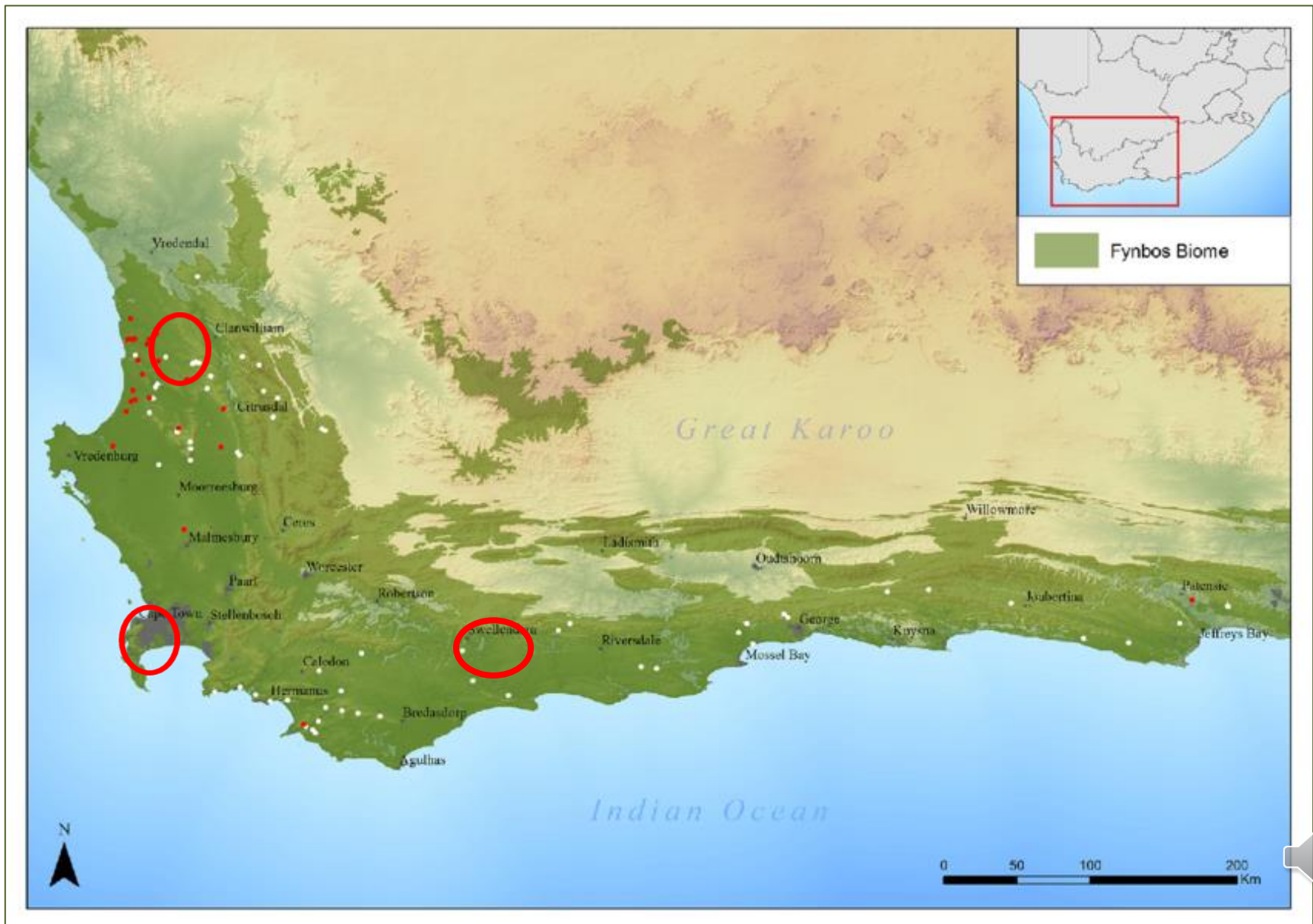


PROTEACEAE – 330 species

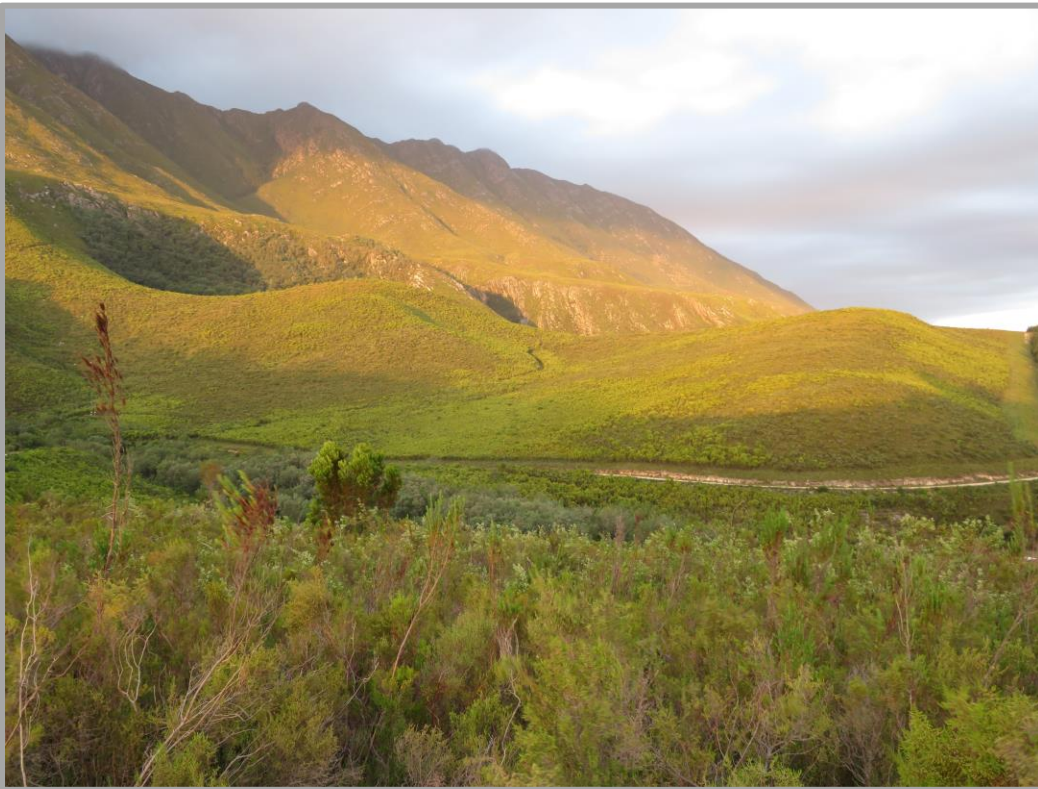


RESTIONACEAE – 320 species

Where we will “go wild” tonight



Landscapes in the Swellendam area



Mountains, plateaux, valleys, hill slopes and flat land at the base of the Langeberg mountains.

Plains and rolling hills south of the N2 highway.



Ericas of the Swellendam area



... .. to see the rest of this wonderful presentation, why not join us?