

CHS NEWS

NEXT MEETING

Monday, 7 November 2022 at 19:30 at The Athenaeum

-- PLEASE NOTE OUR NEW STARTING TIME --

Entrance fee for visitors: R30.

Dr Tony Rebelo asks the question ...

HAS COVID SHED ANY INSIGHTS ON ECO-FRIENDLY GARDENING – CITIZEN SCIENTISTS UNDER LOCKDOWN ?

Covid lockdown severely hampered citizen science data collection on biodiversity in Cape Town during the international intercity bioblitzes. Confined to their gardens, participants turned inwards and explored their gardens. What did we find and what lessons can we learn about the lesser-known wildlife in our gardens?

Come find out about the birds, bees, butterflies, chameleons and garden critters. Just how eco-friendly is your garden?

NEXT OUTINGS

Tues, 1 November at 10:00: To visit the Constantia garden of Richard Theron, a good friend of Lyn's.

This garden is filled with every nook and cranny being used for plants and/or wildlife, including chickens and bees. It boasts a self-made natural pool, as well as many ideas borrowed from Lyn.



Limited to 20 members. Please RSVP to Glenda by Wednesday, 27 October, if you want to join the group.

Fri, 2 December at 11:00: Visit the Jamestown Flower Farm in Stellenbosch. This farm was started during the 2020 lockdown. The farm is 20m wide and 300m long and instead of growing vegetables and strawberries, Wendy, Barbara and Beatrice decided to grow something that was more fun and colourful.

Cut flowers can be bought at R6/stem. Travel together and take a picnic to have lunch next to a stream. This will be a lovely relaxing outing before the start of the 'silly season'.

Please RSVP to Glenda by Monday, 28 November.

OCTOBER 2022

President

Marianne Alexander

Chairlady

Jenny Scarr

Vice-Chairlady

Isabella Hayden

Hon Treasurer

Henry Diesveld

Hon Secretary

Glenda Thorpe

Committee Members

Susan Armstrong Gerald Robertson

Cherise Viljoen Natalie Michie

Honorary Members

Laurie Powis Marianne Alexander

Mary Smith Anne Bean Adam Harrower

Michael Tuffin Bill Elder Ernst van Jaarsveld

"When you have only two pennies left in the world, buy a loaf of bread with one, and a lily with the other."

Chinese Proverb



Tel: 021-531-5713

Fax: 086-514-0998

Post: 22 Rustenburg, Pinelands, 7405

info@capehorticulturalsociety.co.za

<https://capehorticulturalsociety.co.za>

<https://www.facebook.com/pages/Cape-Horticultural-Society/779615695489381>

Instagram – capehortsoc

REPORT BACK

A new home for the CHS equipment

After the Committee had visited the Plumstead garage to assess what was still needed and what could be donated, 11 August was set aside for items to be collected. Members arrived to collect what they wanted and the van from Flower Craft also came to take the vases and anything else we had to offer.



The store – before



Packing the vases



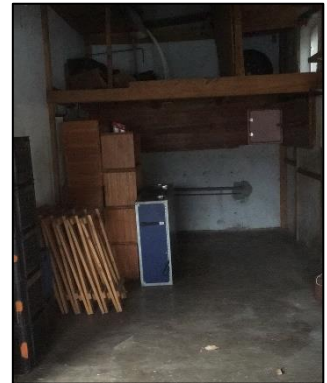
Handing over crates of vases



Crates still to be loaded



Green frames on a trailer



The store – after

1 September was the day set aside to move the balance of the equipment to Epping. Thanks to Susan, Isabella and Andrew, everything fitted in and it was very handy when we needed the trolleys etc for the Plant Sale.



Susan and Isabella with the display board



Susan, Andrew and Isabella after all the hard work



Everything in its place!

Upcycled/Recycled show equipment

Lyn has kept these bowls (below) as a memento of our shows and potted them up, while Flower Craft have cleaned and spruced up the vases which are now ready for use at their many events (right).



Flower Craft held a workshop and used some of our items. Can you spot the green frame in the photo below? I think they may even have used some of our hessian for the backdrop.

The bottles on the right were also part of the many crateloads they collected.



This wooden crate (from the days of Gilbeys) I now see belonged to the WC Rose Society and held 32 x 250ml vases. Lyn first used it for her garden club's tea things but it now adorns one of her outside walls with her ceramic animals and birds.





Do you remember these two triangular stands we used to display the Miniatures in the Decorative Section?

They have been re-purposed to hold plant pots (below).



Nicky also donated some of the vases (seen on previous page) to the Fish Hoek Flower Club. She also kept this one as a memento of the many years she spent exhibiting at our flower shows.

Her sunflower seedlings will have our green sticks (that divided the classes and sections at flower shows) to support them as they grow.

Her artist friends now have some of our lamppost posters to paint on the blank side.

October Plant Table

Spring has definitely arrived. There were plenty of blooms to ooh and ah over. All of these can be seen in the video link https://youtu.be/Z3vklI_vtkU.

The notes below are from the growers:

Corydalis aurea – Poppy family from N America; winter annual.

Gladiolus carneus “Painted lady”

Burchellia bubalina (next page, top centre)

Cyrtanthus falcatus

Dombeya rotundifolia “Wild Pear” – ideal small tree for the garden; insects love the flowers; grows from Namibia to Western Cape to KwaZulu Natal.

Pelargonium betulinum – grows in sandy coastal dunes from Yzerfontein to Knysna; propagates easily by cuttings.

Aloe ciliaris – climbing up a drainpipe about 3m high (next page, top right)

Clivia – pale yellow; packet of 50 bought from CHS nursery and all grew.

Dipogon lignosus “Cape Sweet Pea” or “Mile-a-Minute Vine” – Fabaceae (= Leguminosae) – planted to cover an ugly wall; grows extremely fast; has very pretty diamond shaped leaves; fruits are flat pods like the sweet pea; bees love the flowers.

Vygie (next page, 2nd row, centre) – upright grower; waterwise.

Hypericum “St John’s Wort” – partial shade.

Geranium madarense (next page, 2nd row, left) – biennial; dies after flowering but sets seed.

Campanula “Bell Flower” (right, above) – Campanulaceae – a very rewarding plant; flowers profusely all spring and summer; fed with Talborne and foliar feed occasionally; obviously happy in its position in a long bed running up on the side of a path.

Euphorbia lambii “Tree Euphorbia” (right, below) – from Canary Islands; waterwise.

Raphiolepis “Indian Hawthorn” – gets late morning sun; also a pink variety.



Pisum sativum "Purple pea" – seeds obtained from Seed Swap at Oude Molen Eco Garden.

Clivia miniata (below, top left) – Belgian strain; loves to be under trees.

Statice perezii (below, 2nd row, right) – very hardy; watered once a month in summer; planted in an open field.

Ageratum – white



Jenny's choice for the evening was Shelley's *Cyrtanthus falcatus* and Rodney's collection of Clivias got a Special Mention.



Rondebosch Permaculture garden:

Who would have thought that behind the brick walls an absolute gem of a garden awaited. This permaculture forest now stands on what was the tennis court. The 20 banana rings that were initially dug and planted up are still evident by the number of banana trees in this garden.

The 'tank farm', with water harvested from the downpipes, has sustained the family throughout winter – so much so that the City Council came to replace the water meter, as they were convinced it was broken because there had been no readings.



Left: Slung from the rafters is a banana tree trunk, potted up with strawberry plants.
Right: The garden which once was the tennis court.



Left: The 'tank farm' – 10 x 5000 litre tanks plumbed into the house's water system.
Right: A bed edged with banana tree trunks and mulched with wood shavings.



Left: Andrew admiring the paw-paws.
Centre: A herb spiral made of leftover bricks.
Right: The hostess explaining how the banana fruits grow and ripen.

Members' plants

Yvonne's tall bearded Irises, brought inside to enjoy.



Andrew and Glenda's purple poppy with *Pelargonium graveolens* in the background.



SPRING PLANT SALE



We decided to celebrate Garden Day at our sale so Natalie and Caroline organised the flower crowns while members donated all the flowers. All activities of the morning have been videoed (link to



follow) but here are some of the 'flower girls'.



The 'How to make a crevice garden' demo by Jenny went very well, with lots of interest from the public. The completed garden was raffled and Chris Wren-Sargent was the lucky winner.

Joy Woodward was the recipient of the 2nd prize, a gardener's apron. We raised R710 for this raffle.

The leftover plants were donated to Kendrick House, Thornton, for the landscaping of their garden. Helen Keller Society also received a large donation for their upcoming fete.



I love statistics so, for those who are interested, this is what went down:

- 🌱 Items to sell – ± 806 potted plants, plus bundles of loose cuttings, packets of seeds, bags of mountain rock, plant pot hangers etc.
- 🌱 Approximately 504 plants were sold on the 8th, with another 52 being sold on the following Tuesday.
- 🌱 The unsold plants amounted to about 254, which would have brought in R3365 – but made a worthwhile donation to the two retirement homes.
- 🌱 The tea garden brought in R1050 and the raffle R705.
- 🌱 The donations for the flower crowns netted R635.

Our Treasurer's preliminary figure for the Spring Plant Sale is close to R13 000.00. A few outstanding charges are awaited and the final figure will be advised by next month.

And this success was all due to team work!

Of the 33% of our membership who were involved in the sale in one way or another, there were

- 32 members who grew plants and provided cut flowers for the crowns;
- 17 who came out on either the Thursday or Friday to help with IDing, pricing, carrying and laying out of plants.
- 26 helped on the day (taking money, making tea, selling tickets etc, etc), many of whom had also worked on the days prior to the sale;
- 21 members provided the delicious eats for the tea garden, again a number of whom had also done a stint on the Thursday or Friday;
- Another 10 members (I may not have seen everyone) were spied on the day supporting their society by buying plants and enjoying a cup of tea.

From the CHS Committee, a very big thank you to everyone who gave of their time, their labour, their expertise and their cash to help make this yet another successful event started many years ago.

The video of the sale and the crevice garden demo will be uploaded to You Tube as soon as the editing has been finalised.

ITEMS OF INTEREST

- 🌱 **Elgin Open Gardens:** Sat/Sun, 29/30 Oct and 5/6 Nov – brochures can be found at Ferndale, the Greenhouse Nursery, Starke Ayres and Kirstenbosch, or visit www.elginopengardens.co.za.
- 🌱 **Franschhoek Open Gardens:** Fri/Sat/Sun, 28/29/30 Oct – 10:00 to 17:00 each day, 10 gardens on show, R200 for the whole weekend. Visit www.gofranschhoek.co.za for more details.
- 🌱 **Rustenberg Manor House:** Fri/Sat/Sun, 28/29/30 Oct – 09:30 to 16:40. R50 entry fee and plants for sale. Visit www.rustenberg.co.za for more details.
- 🌱 **Greyton Rose and Garden Fair:** Sat/Sun, 29/30 Oct – 15 gardens on show. Book on Quicket.
- 🌱 **Swellendam Open Gardens:** Fri/Sat/Sun, 4/5/6 Nov – R120 per day/R200 for 2 days. Book online at www.swellendamgardenexpo.co.za
- 🌱 **Stellenbosch Garden Town Week:** 20 – 30 Oct – many activities, workshops and open gardens. Visit www.gardentown.visits Stellenbosch.org for all the information.

And, further afield, should you be travelling up the Garden Route:

- 🌱 **Hoekwil Open Gardens** (near Wilderness) – Sat/Sun, 5/6/ Nov – 12 gardens open.

If you should hear of plant exhibitions, open gardens and the like taking place, please send details to Glenda.