



All the flowers of all the tomorrows are in the seeds of today.

Indian Proverb

CONTENTS

Next Meeting	1
Forthcoming Outings	1
Welcome to	1
From the Committee	2
Report-back	3
• February exhibits	
• Social media	
• 2025 Charges	
Know Your Committee	4
Disperis fanninea	5
CHS Procedures	6
As a matter of interest	6
• Portulacaria afra	

NEXT MEETING

Monday, 3 March 2025 at 19:30 at The Athenaeum

Members: No entrance fee

Visitors: R40 per person

Dr Jerome Davis has had a lifelong passion (or is it an obsession?) with water and aquatic life. When all the other 5-year-olds were pretending to be dogs, cats or horses, he was pretending to be a fish – nice 'n quiet ...

Dr Davis is passionately involved in designing the cleanest and most cost-effective systems for EcoPools so that poisonous swimming pools and dead water can be replaced with functioning aquatic ecosystems for all who care about ...

HEALTH, BEAUTY AND THE ENVIRONMENT

WHATS NEW? Seasonal (quarterly) Plant Raffle at meetings?

Bring plants for the Autumn raffle table and bring cash to buy your R10 tickets. More details to follow for this coming meeting.

FORTHCOMING OUTINGS

Fri, 14 March at 09:45 for 10:00: Visit John Venn's garden in Muizenberg which he opens to collect donations for the restoration of the stream which runs through Muizenberg Park, a project which he is leading on behalf of the local community. Limited to 20 members. RSVP to Glenda by no later than 12 March.

Fri, 21 March (public holiday) at 09:45 for 10:00: Visit the home of Ilsa Menck in Zeekoevlei. She designs nature inspired clothing with sustainable natural fibres along with minimum garment processing. She uses hemp and pure linen as her philosophy is that the planet needs alternatives to fast fashions. Ilsa will demonstrate how the fabric is dyed with natural plant dyes. Limited to 20 members. RSVP to Glenda by no later than 18 March.

No outing has been organised for April as WE'RE HOLDING A PLANT SALE!! There's no time to be looking at other people's beautiful plants when we should be tending those we've potted up for *our* Sale. 😊

WELCOME TO ...

... Belita von Steiger and Marion Lewis. We hope that membership of the CHS will bring them as much pleasure and knowledge as it does the rest of our members.

We welcomed Angela Wessels as a member in August last year. She was enjoying being a member but, sadly, she passed away in January. Our condolences to her family.

FROM THE COMMITTEE

The Plant Sale is on the front burner, and the heat is rising!

We would like to borrow trestle tables (contact Chris: 060-402-2089). Volunteers will be called for soon.

Isabella says: "This month is your last chance to grow something for the big sale on 13 April. You can still buy seedling trays or small plants in 12cm pots and grow them big and beautiful by then. Keep checking the shape of your plants and trim them so they are dense and bushy. You can cut back by a third if you have six weeks to grow new leaves – this is called the 'Chelsea Chop', I believe!

Pick off all yellow leaves, feed with Seagro if they need greening up, or a potassium-rich fertilizer, to encourage flowers.

If you have been feeding and watering well over summer, you might need to re-pot your larger plants. And if you've done all that, start taking cuttings for next year! I'm finding that cuttings that wouldn't root in spring or early summer are rooting more easily now."

Anne has a request: "As Chris mentioned last month, we are creating a more appealing Plant Sale this year. The same idea is being applied to our tea garden. We will be having pretty tables set up with matching tablecloths and flower arrangements. We are relying on our members to bring eats and these will be plated so they look very attractive and appealing. The 'tea garden' is an important part of our fund-raising and we are relying on everyone to start thinking of what to bring. Best is smallish items, as we offer 2 eats for the price of your ticket, so think along the lines of crunchies, brownies, biscuits, small savoury or sweet muffins, cupcakes, sandwiches cut in triangles or cakes, loaves etc, that we can slice into a serving portion. Your contribution is vital to the success of the tea garden.

In case you're looking for inspiration, at the March meeting I will have some printed copies of those recipes for larger bakes of cakes (tray bakes), slices, crunchies etc. and a list to let me know what you are able to provide.

We are still looking for an urn. Please contact me on 083-562-8368."

Social Media

A reminder if you have any interesting photographs (preferably with an explanation) you would like to share with others, send them via email to Jenny Liedtke at jennyliedtke@gmail.com. She will do posting of photos and interesting information once a week on **Instagram**, which automatically uploads to **Facebook**. Jenny is waiting to hear from you. When last have you Googled our Facebook page?

The same question could be asked about the **CHS website**. Have you seen the latest updates? If you know of anyone interested in becoming a member, the application form (either a pdf or Google sheet) is online.

Have you linked up to the **CHS Members WhatsApp group**? Follow this link to join the WhatsApp group: <https://chat.whatsapp.com/J6JYIhTtJijAIBdlkCZmBO>. If you have any difficulty, please consult someone between the ages of 10 and 30. 🙋

You may set up your phone to delete messages after so many days. Some people like to keep messages forever. You can also clear the chat on your side for yourself personally.

If you come across something gardening-related that is really worthwhile/recommended, you could share the details. Please remember this is a group for CHS members to learn from one another. It is also not a sales platform.

Charges for 2025

The annual subscription was increased to R240 for single membership (R120 if you can provide a student card) and R390 for a family membership for the forthcoming year.

Free entrance for members will remain but visitors will be asked to pay R40 for each meeting they attend.

Visitors are welcome to join us for our monthly garden outings provided members have not filled the quota. These visitors will be asked to pay R40 for the privilege, payable on the day.

Sunday 13 April
9.30 am – 1.30 pm



The Cape Horticultural Society
PLANT SALE
2 Dressage Close
(off Spaanschemat River Rd), Constantia

Psssttt! Plant NOW for a great spring display!

- Loads of lovely plants, perfect for your garden
- Unusual plants on offer, and great advice
- Tea, coffee and eats
- Children's entertainment
- Card facilities available

Enquiries: Belinda 0718726923
Chris 0604022089
info@capehorticulturalsociety.co.za



REPORT BACK

February Exhibits

Exotic:

Gloriosa lutea

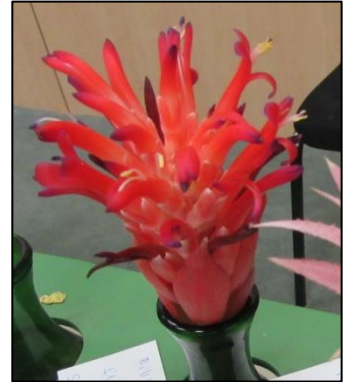
Duvernoia adhatodoides "Pistol bush"

Aechmea fasciata (far right)

Billbergia pyramidalis – flower short-lived (right)

Centaureus cyanus (Cornflowers) – very easy to grow from seed; flower all through summer; come in many colours; blue is sought after because of its rare colour; produce blue dye; edible; rich history of symbolism and folklore. (Right)

Pomegranate – offspring of a very old tree; only watered by rain. (Far right)



Clerodendrum thomsoniae "Bleeding Heart" – from west Africa – the genus *Clerodendrum* originates largely in tropical and sub-tropical Asia and Africa. This climber puts on a spectacular show in summer and early autumn. The bright red flowers emerge from within white bell-shaped calyxes creating an impression of a bleeding heart. Grow in sun/dappled shade.

Primulina

Beaucarnea recurvata "Pony Tail Palm" – Asparagaceae – approximately 20 years old; grown in a pot in Sea Point; top removed 6 years ago; second time of flowering. (Left)



Indigenous:

Ruttyruspolia "Phyllis van Heerden" – huge shrub; flowers end of summer; attractive pink flowers; can be cut back.

Bulbine abyssinica – annual; dies down in winter; pops up every spring. (Above)

Scadoxus multiplorus subsp *katharinae* – has taken about 10 years to flower; semi-shade; highly toxic. (Right)

Eucomis vandermerwei (Far right)



GETTING TO KNOW YOUR COMMITTEE

It's essential for our members to know who does the planning and organising of outings, meetings, and much more,



for you to enjoy your membership of the CHS.

Back, L to R:
Isabella Hayden;
Anne Gleeson;
Chris Wren-Sargent;
Belinda du Rand
Front, L to R:
Susan
Armstrong;
Marianne
Alexander;
Glenda Thorpe;
Cherise Viljoen

Over the next few months, each one will tell you about their role on the Committee and a little bit about themselves.

Belinda du Rand tells us: "I enjoy looking at/shopping for/admiring/learning about/visiting/sharing/and collecting plants. I love gardening, particularly flowers and variegated leaves. Fuchsias are my current passion. I like to garden in an environmentally friendly and responsible way, and my goal for this year is to become better at growing and harvesting vegetables.

I host the Plant Sale, was part of Chris's membership drive committee. I also assist where I can."

Chris Wren-Sargent has this to tell us: "I've been a Capetonian most of my life, and I taught for four decades. My interest in plants began when I joined a Bio teacher in a project planting trees at Muizenberg High. I can look back at every school I taught at and see trees that were planted by various pupils. At RBHS (Rondebosch Boys High), Saturday detention pupils were occasionally dragooned into digging holes for yellowwoods!

Since retirement, I've spent time volunteering at the Kirstenbosch nursery to learn about propagating bulbs, and developing my own garden. Marja (my wife) and I like lush and a not so manicured garden, with lots of variety. We also love the wildlife that gardens bring, and the sense of calm we find in nature. We have a son, Tomas, who worked as an architect for some years before re-training in website design, and who will, sadly, be emigrating soon.

I joined the CHS in October 2021 and found it a place full of people who do interesting plant things. I like the fact that there is a place for the enthusiastic gardener who is low on theory as well as the expert horticulturist.

My role on the committee is mostly organisational as that suits my skills, but I also enjoy the different ideas and approaches on display in our meetings. I led, with a team, the 2024 membership drive and am, at present, heading up the Plant Sale Committee.

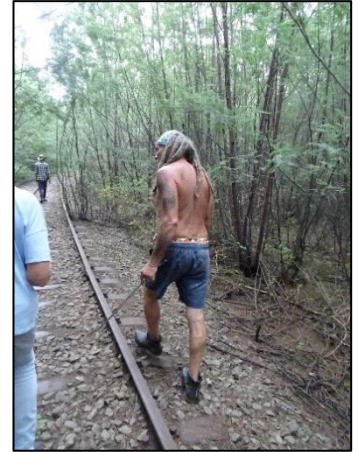
Other interests? History, politics/current affairs, reading, fishing."

More next month!

PLANT DISCOVERY WITH A DIFFERENCE – *Disperis fanniniae*

I recently went on a search for the grave of my great grandfather’s daughter, Elizabeth, who died at the age of 4. He, John Otter Jackson, an Administrator of Native Law in Natal was posted, with his wife Sarah (nee Gower) and 7 children, to Highbury near Bulwer 1881.

Initially they lived in mud and daub huts, the foundations of which are said to be there still. The new owners of their house, which was built in 1884 and had included the post office, store and courtroom, couldn’t help so suggested we enquire at the nearby ‘One Love Farm’. This turned into quite an adventure with the dreadlocked and tattooed hippy owner taking us along an old disused railway line through dense thickets of wattles to where he thought it was. No luck – BUT while looking around the remains of an old stone wall, I noticed plants with white flowers thriving under these invasive trees. They were hooded orchids – *Disperis fanniniae*!



Research revealed that *Disperis fanniniae* (left, below) had been discovered by George Fox Fannin who named them after his sister, Marianne Fannin. And yes – we share a name! And there is a family connection. She was my great grandmother’s niece and, what’s more, she is a famous artist. Her botanical illustrations can be seen at Trinity College, Dublin.

Two other plants were named after her – a rather nondescript looking Asclepiadoideae (milkweed), *Sisyranthus fanniniae*, and *Streptocarpus fanniniae* (right, below) – which recently featured on one of Leon Kluge’s videos, growing under a waterfall.



Grave of 4 year-old Elizabeth Mary Gordon Jackson at Highbury



‘The Four Grace’s sisters’ (Gowers) from Karkloof - married a Jackson, a Shaw, a Fannin, and an Acutt.



Marianne Alexander

REMINDER: CHS PROCEDURES

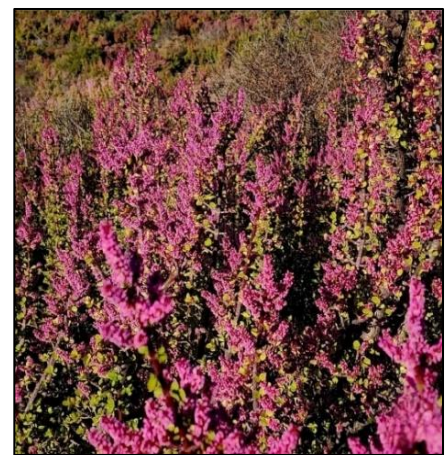
- Membership fees are now due. Cash can be paid at monthly meetings. Renewal forms are no longer used so a note needs to be attached, with your name, including if there has been a change to your residence or phone number, as well as stating the amount you are paying. We can also take card payments. If you prefer to do an EFT, please give the same information when advising that payment has been made. Records need to be kept.
- As you know, there is no entrance fee for members, but you do need to get your lucky draw ticket (for the meetings between the seasonal raffles) . Visitors who come with you will have to pay R40 each and are also given a ticket.
- As there is always a limit on numbers for garden outings, you must please put your name on the list. A few days before the outing you will receive the necessary information – description, directions etc. If you are sure your name was put on the list but you do not get the directions, please ask – these slip-ups do happen. 🙏
- Plants you brought for the Nursery Table that do not get sold, please take them back home.
- Library books are there to be borrowed. Please fill in a borrower’s card and place it on the trolley. You have up to 2 months to return them.
- Please make a ‘label’ for any exhibits you bring. We do not want to miss out reporting on them in the newsletter.

AS A MATTER OF INTEREST ...

- The Garden Museum, in London, is housed in the Church of St Mary-at-Lambeth. The two John Tradescants, the Elder and the Younger, are buried in this graveyard

https://www.facebook.com/story.php?story_fbid=10159763347249538&id=721609537&rdid=BYdgb9irLGroF96N#

- Bloomin’ gorgeous!



Has your plant ever bloomed in such profusion? *Portulacaria afra* flowering, after 18mm of rain, in January, on a farm south of Aberdeen, Eastern Cape, and on the surrounding mountains.

