



One of the great things about gardening is that when the huge wave of summer does finally break, and its leaping curve of green flings into every garden a marvellous iridescent spray of petals, in colours our language hasn't caught up with yet, its joyful and indiscriminate tide lifts everyone off their feet – both proper gardeners and people like me.

Paul Jennings

CONTENTS

Next Meeting	1
Forthcoming Outings	1
Welcome to	1
From the Committee	2
Report-back.....	2
• AHS Visit	
• Garden Day	
• October Outing	
My Visit to Exbury.....	5
Amaryllis/Lily Borer	7
As a Matter of Interest	8

NEXT MEETING

Monday, 3 November 2025 at 19:30 at The Athenaeum

Members: No entrance fee

Visitors: R40 per person

CHELSEA 2025

Leon Kluge really needs no introduction and will share with us his experience of what it takes to put the exhibit together, as well as the excitement of receiving accolades and special awards.

What a privilege to have this up-close and personal visit and time to have your questions answered.

NB: BRING A FRIEND

NB: The Exhibit Table and Nursery Table will be taking a break for the night!

Specimens and plant contributions will be very welcome again at our first meeting, 2 February 2026.

FORTHCOMING OUTINGS

Sat, 15 November at 09:30 to visit the Constantia garden of Joan Main.

It is an English garden style, with lots of variety and everything always looks lush and healthy. It includes roses, salvias, alstroemeria, fuchsias, dahlias, a vegetable garden and much more. She also has lots of interesting and unusual plants in pots on her stoep.

Limited to 20 members. RSVP to Glenda by no later than Thurs, 13 November.

FROM THE COMMITTEE

Name Badges

How often have you avoided someone because you don't remember or don't know their name? And how often has a conversation been hampered by desperate attempts to remember the name of the person to whom you are talking? And how much easier it would be if the person facing you had a name badge on! It is such a relief to glance surreptitiously at the badge and then pop the name out as if it had been firmly fixed in your brain all along.

That is why we are very keen to have members wearing their name badges at meetings and on outings.

President Marianne Alexander | **Chairlady** Cherise Viljoen | **Hon Treasurer** Isabella Hayden | **Hon Secretary** Glenda Thorpe

Committee Members Susan Armstrong, Chris Wren-Sargent, Anne Gleeson, Belinda du Rand

Honorary Members Marianne Alexander, Mary Smith, Adam Harrower, Bill Elder, Ernst van Jaarsveld

22 Rustenburg, Pinelands | 021-531-5713 | info@capehorticulturalsociety.co.za | <https://capehorticulturalsociety.co.za>

If you do not have a CHS name badge, ask Glenda via email (cost R100) and she will have it for you at the next meeting. If you forget to wear your badge to a meeting, Glenda will give you a hand-written one, at a small fee of course.

Let's name-up from the next meeting: Monday 3 November.

Changing of the Guard

The committee has been stable for a couple of years, but recently two members have indicated that they would like to reduce their profiles in future. So we are casting the net to co-opt new committee members.

We are especially interested in the following areas: social media, finance/bookkeeping and general organiser. And we are always keen on someone who is enthusiastic and competent across a range of areas: introducing or thanking speakers, having contacts, making things happen and being prepared to put in some effort.

If you would like to be part of this team, please speak to one of the current committee members, or email your willingness to our Secretary.

Christmas Party

Our Christmas Party occurs on Monday, 1 December, at the Athenaeum. This year there is going to be a small entertainment – a light-hearted quiz. Don't be nervous – you do not have to do any studying beforehand, as this is general knowledge with a holiday flavour.

Other details will follow but start thinking Christmassy thoughts.

WELCOME TO ...

... Angie Dyer, Gidi and Andrew Caetano who recently joined as members. We hope that their time with the CHS will bring them as much pleasure and knowledge as it does the rest of our members.

REPORT BACK

AHS Visit

Members of the American Horticultural Society spent an afternoon with CHS members at Arderne Gardens as part of the Cape Town leg of their tour.



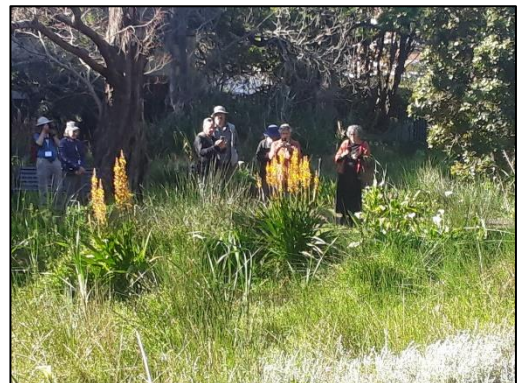
Paul Barker and his gardeners of FOTAG (Friends of the Arderne Gardens) planted a tree, *Bolusanthus speciosus*, in honour of AHS. (Left)



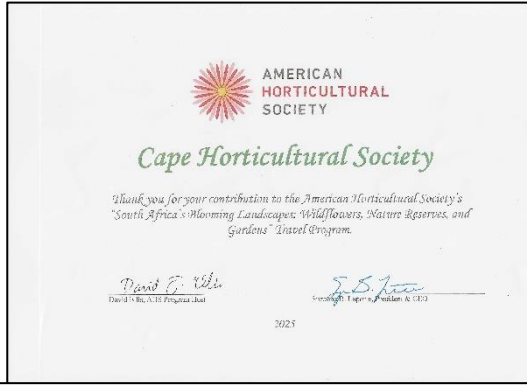
David Ellis, Program Host, presented certificates to Cherise Viljoen and Clare Gibbon of the CHS and FOTAG respectively. (Right)



Paul pointing out one of the few Wollemi pines (*Wollemia nobilis*) growing in the garden. (Left)



A group looking at the restored wetland with *Wachendorfia thyrsiflora* in bloom. (Right)



L to R: On the new walkway around the spring ponds; the certificate; chatting under the *Camphora officinarum*



After a long day of walking around gardens, AHS members enjoy the conversation with CHS members over tea and cake.



Watching as the *Bolusanthus* is being planted; a group of Bronze Mannikins above the spring pond.

AHS's reply to our thank you for the certificate:

Dear Glenda,

Thank you so much to you and your entire team for the extraordinary effort that went into planning and facilitating our AHS group's visit. Our travelers so thoroughly enjoyed the opportunity to meet members of the Cape Horticultural Society, and they were profoundly touched by the tree-planting ceremony! Thank you so very much!

I would love to receive any photos you may have.

Thank you again, most sincerely, for making this very special meeting between our organizations possible!

Warm regards,
Mercedes



Mercedes Bryant
Director of Travel Studies
American Horticultural Society

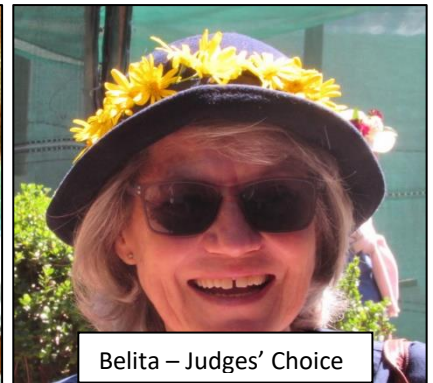
Garden Day



Anne – Most Charming; Belinda – Most Exotic



Di – Most Indigenous



Belita – Judges' Choice



Susan – Most Over the Top



Glenda – Judges' Choice



Geert – Most Innovative



Georgina – Judges' Choice



Andrew – Chairlady's Choice, with the Chairlady



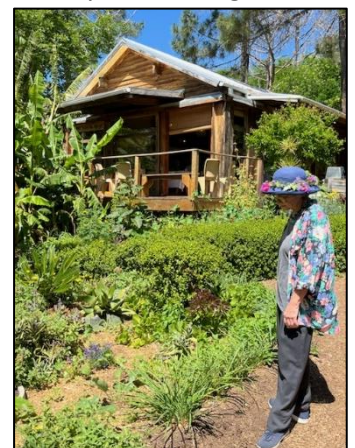
Lynne – Judges' Choice; Tony – Chairlady's Choice; Tina – Most Stylish

The weather was pleasant, the hats gorgeous, the refreshments yummy, the company friendly – all the ingredients for a successful Garden Day.

We would like to thank our sponsors for their generosity in donating prizes for the winners:



- Happy By Nature – R500 voucher; 10 x 10% discount vouchers
- Stellenberg Gardens Nursery – 10 x Peach Foxgloves
- Super Plants – 5 x R100 vouchers
- Ferndale Nursery – 3 x Variety of Atlantic Fertiliser bags



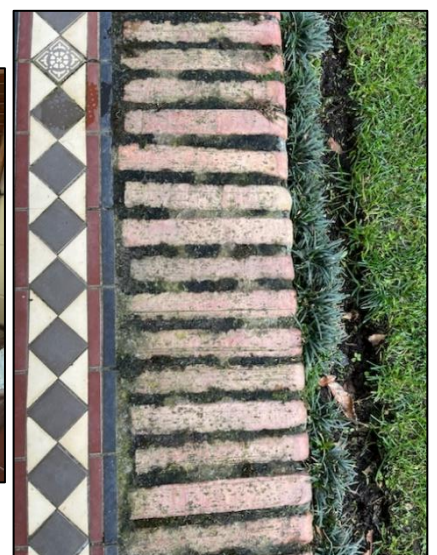
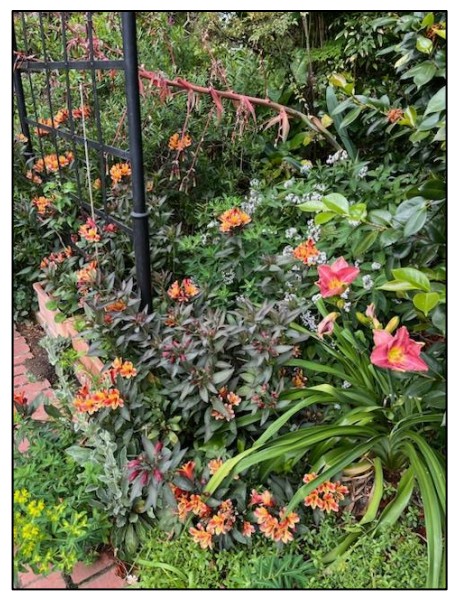
October Outing

This was a visit to Stuart McLeod’s garden in Kenilworth. Entering this property of nearly an acre was like escaping into a beautiful haven. The magnificent arts and crafts home built in 1896 with wrap around balcony transported us to a different time.

The main garden was away from the road and extremely quiet and peaceful with numerous majestic trees. Large camellias, two rose gardens, ponds, fountains, a vegetable garden and fruit trees added to the mix. Old structures on the property include a chicken coup and possibly a wheat threshing shed which could have been part of Stellenberg at one time. Beautiful old tiles and brickwork were featured and he used mondo grass in different sizes to add the defining lines around the stoep and other parts of the garden.

Stuart is a passionate gardener who truly loves and nurtures this precious garden in what is becoming a more built-up area.

Anne Gleeson



Various aspects of the garden, and relaxing with a welcome cup of tea

MY VISIT TO EXBURY

During my recent sojourn to the UK, besides seven different nurseries, I was lucky to visit two gardens – Kew and Exbury.

Exbury Gardens and Steam Railway is a 200-acre site near the New Forest in Hampshire. Near Southampton and next to the Beaulieu River, this informal woodland garden opens to visitors from March to November. Created and managed by the Rothschild family, it boasts large collections of Magnolias, Rhododendrons, Azaleas and Camellias. Exbury House is not open to the public.

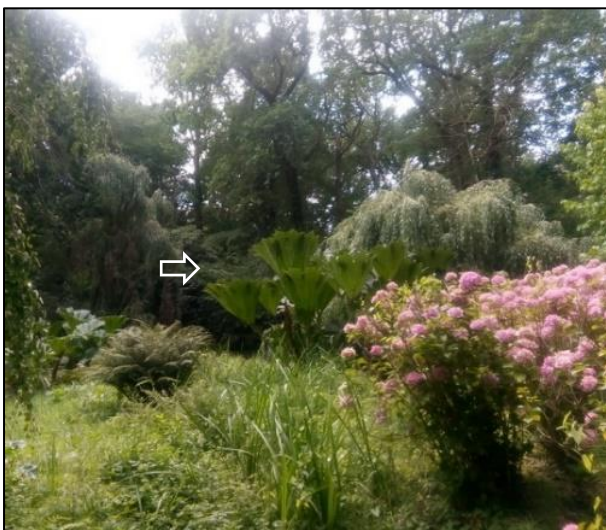
Each season brings different plants which are at their best. While I was there the Hydrangeas were a highlight. They have more than eighty different cultivars. The perennial garden was a sight with a bank of paniculata Hydrangeas at one end.

At other times of the year the many paths will show off the Azaleas and Camellias, bulbs and Irises, roses and ornamental grasses, Wisteria, Gunneras and a multitude of different trees. In autumn the reds, oranges and yellow of their leaves put on their own show.

A feature of the garden is the Steam Railway – a 20-minute ride on a 1,5 mile track.

Since I have been back I have learned of a spectacular collection of Nerines housed there, perhaps the greatest collection of *Nerine sarniensis* hybrids in the world. The collection was started at Exbury before WW2, sold to a grower in Switzerland where they underwent more breeding, and then bought back by Nicholas de Rothschild.

Nicola Anthony



Clockwise: *Hydrangea paniculata*; *Hydrangea*- purple; *Gunnera* flower; *Gunnera* (centre of the photo)

AMARYLLIS /LILY BORER – *BRITHYS CRINI*

Amaryllis, along with *Clivia*, *Cyrtanthus* (fire lilies), *Nerine*, *Zephyranthes candida*, *Crinum* and *Brunsvigia* are generally trouble free plants with one exception. That is the damage caused by the notorious black and white Amaryllis /lily borer- *Brithys crini*.

It is the caterpillars which hatch from clusters of egg laid on the host plant's leaves by moths which do all the damage. They can reach about 40mm. They have voracious appetites and can decimate plants while mining into the leaves within a day. They also often burrow down into the crown of the plant causing irreparable damage.



Check your plants frequently from early summer: Remove the young caterpillars and squash those feeding under the upper 'epidermis' layer of the leaves. Cut off and destroy any heavily infested leaves. Some may work their way down the leaves to their bases or even into the bulbs which should then be destroyed.



Parasitic wasps and assassin bugs help control infestations. For bad infestations use a suitable insecticide like Margaret Robert's Biological Caterpillar Insecticide which contains *Bacillus thuringiensis var kurstaki*. This is not harmful to fish, birds and beneficial insects. To break the life-cycle, apply every 7 to 14 days.

[Note to members: R280 for a 50g bottle. At the 5g per litre recommended application rate, that would provide 10 applications.]

Marianne Alexander

Source: The Garden Guardian's Guide to Environmentally Responsible Garden Care by Johan Gerber

AS A MATTER OF INTEREST ...

- It's the season for open gardens. Make the most of it. here are the basic details. Google should tell you more.
 - **Rustenberg Open Gardens:** Friday 31st October to Sunday 2nd November
 - **Stellenbosch Garden Town:** Friday 31st October to Sunday 9th November
 - **Durbanville Open Gardens:** 1st and 2nd November
 - **Fish Hoek Garden Club Flower Show:** Saturday 1st November
 - **Avondale Wine Estate Open Gardens:** Saturday 1st and Sunday 2nd November; 10am to 4pm
 - **Elgin Open Gardens:** Sat 1st and 8th November and Sunday 2nd and 9th November; 9.30am to 4 pm
 - **Franschhoek Open Gardens:** Friday 7th November to Sunday 9th November; 9am to 4pm
 - **Tokara Rare Plant Fair:** Saturday 8th November; 8am to 4pm
- For those members who remember them, Ruth Allen and Cherrie Klesser passed away recently.
- The CHS has a presence on these social media platforms:
 - CHS Members WA group: <https://chat.whatsapp.com/J6JYlhTtJijAIBdlkCZmBO> (members only)
 - Facebook: <https://www.facebook.com/capehorticulturalsociety/>
 - Instagram: @capehortsoc
 - Website: www.capehorticulturalsociety.co.za
- We are affiliated with Mediterranean Gardening International. Information about what they do in their mediterranean climates can be found by clicking on their links on www.mediterraneangardeninginternational.org We also receive newsletters from them during the year, which are very informative.



Owning plants isn't hoarding, it's hoardiculture. Totally different thing.

Photos: A Gleeson, N Anthony, M Alexander, WhatsApp, A & G Thorpe
Any and all photos taken at CHS events will be used in the newsletter and on social media.